

## CETO 2 SCHWEISSDECKEN

### Umschreibung

Dieses Gewebe ist ein Glasgewebe, beidseitig mit Silikonkautschuken beschichtet.

### Temperatur

Höchsttemperatur 550°C, kurzzeitige Belastung bis ca. 600°C.

### Technische Anwendungsinformationen

- CEPRO empfiehlt einen mehrlagigen Einsatz von Decken zum optimalen Schutz.
- Setzen Sie Schweißdecken vorzugsweise in einem Winkel von mindestens 15 Grad ein.
- Die Temperaturangabe dient als Richtschnur, Sie sollen, das ausgewählte Decke bzw. Hitzeschutzgewebe immer vorab auf seine Eignung hin zu testen.
- Kontrollieren Sie die Schweißdecken regelmässig auf Risse und/oder andere Mängel. Ersetzen Sie beschädigte Schweißdecken nach Bedarf.
- Wegen des sehr vielfältigen Gebrauchs von Schweißdecken kann keine Garantie auf den Gebrauch der Schweißdecken gegeben werden. Der Endnutzer ist dafür verantwortlich zu bestimmen, ob die Schweißdecken sich für die spezifische Situation eignen und einen ausreichenden Schutz während der auszuführenden Arbeiten bieten.
- CEPRO Schweißdecken werden an den Schnittkanten mit hochwertigem Kevlar-Garn verarbeitet.

### Eigenschaften

Das Silikon besitzt hohe Belastbarkeit, auch unter extremen mechanischen, thermischen und elektrischen Einflüssen.

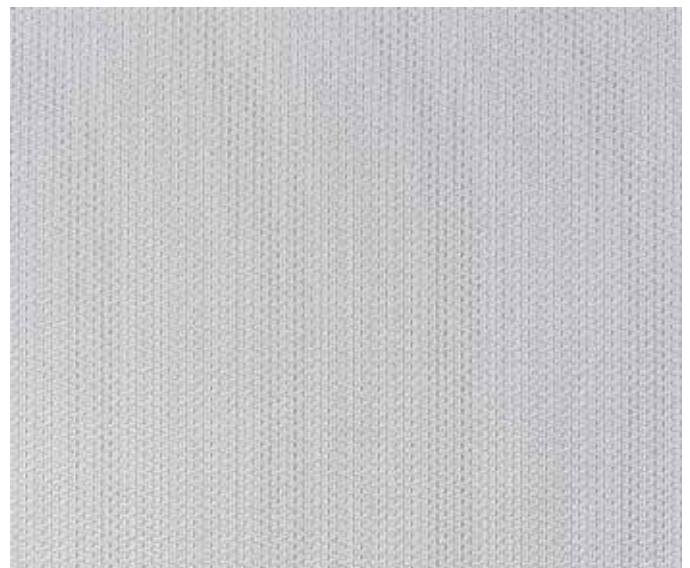
- gute Licht, UV-, und Oxidationsbeständigkeiten
- weitgehend beständig gegen Säuren und Laugen
- witterungsbeständig
- gute schmutz- und ölabweisende Wirkung
- gute elektrische Isolierwirkung

### Verfügbare Abmessungen

Ganze Rolle 25 lfm, Breite 100 cm

56.52.06.1025

Konfektionierte Decken auf Anfrage.



## CETO 2 WELDING BLANKET

### 1. IDENTIFICATION OF THE SUBSTANCE / PREPARATION AND COMPANY

|                                |                                                                                           |                      |               |
|--------------------------------|-------------------------------------------------------------------------------------------|----------------------|---------------|
| <b>Product description</b>     | Glass fibre material                                                                      |                      |               |
| <b>Manufacturer / Supplier</b> | <b>Cepro International BV</b><br>Provinciënbaan 16<br>NL-5121 DL RIJEN<br>The Netherlands | <b>Date of issue</b> | February 2014 |
|                                | Tel. no. for information / emergency                                                      | +31 (0)161 22 64 72  |               |
|                                | Fax no. for information / emergency                                                       | +31 (0)161 22 49 73  |               |

### 2. HAZARD INFORMATION

#### Classification of the substance or mixture

#### Classification according to Regulation (EC) No 1272/2008 [CLP]

Not determined

#### Classification according to Regulation 67/548/EEC or 1999/45/EC

No classification

#### Label elements

The product does not require a hazard warning label in accordance with EC-directives. This product is an article and therefore it does not require labelling according to EC directives/GefStoffV.

#### Other hazards

#### Physico-chemical hazards

no particular hazards known.

#### Environmental hazards

no particular hazards known.

#### Other hazards

none

### 3. COMPOSITION / INFORMATION ON INGREDIENTS

|           |                                                   |
|-----------|---------------------------------------------------|
| Range [%] | Substance                                         |
| 85-100    | glass<br>CAS:65997-17-3, EINECS/ELINCS: 266-046-0 |

|                            |                                                                                                                      |
|----------------------------|----------------------------------------------------------------------------------------------------------------------|
| Comment on component parts | No dangerous components.<br>Substances of Very High Concern - SVHC: substances are not contained or are below 0,1 %. |
|----------------------------|----------------------------------------------------------------------------------------------------------------------|

### 4. FIRST AID MEASURES

#### Description of first aid measures

**General information** Change soaked clothing.

**Inhalation** Ensure supply of fresh air. In the event of symptoms refer for medical treatment.

**Skin contact** When in contact with the skin, clean with soap and water. Consult a doctor if skin irritation persists.

**Eye contact** In case of contact with eyes rinse thoroughly with plenty of water and seek medical advice.

**Ingestion** Not applicable

#### Most important symptoms and effects, both acute and delayed

No information available

#### Indication of any immediate medical attention and special treatment needed

Treat symptomatically  
Forward this sheet to the doctor.

## CETO 2 WELDING BLANKET

### 5. FIRE-FIGHTING MEASURES

|                                                              |                                                                                                                                    |
|--------------------------------------------------------------|------------------------------------------------------------------------------------------------------------------------------------|
| <b>Suitable extinguishing media</b>                          | Product itself is non-combustible. Fire extinguishing method of surrounding areas must be considered.                              |
| <b>Extinguishing media that must not be used</b>             | None.                                                                                                                              |
| <b>Special hazards arising from the substance or mixture</b> | Unknown risk of formation of toxic pyrolysis products.                                                                             |
| <b>Advice for fire-fighters</b>                              | not applicable<br>Fire residues and contaminated fire-fighting water must be disposed of in accordance with the local regulations. |

### 6. ACCIDENTAL RELEASE MEASURES

|                                                                            |                                                                                        |
|----------------------------------------------------------------------------|----------------------------------------------------------------------------------------|
| <b>Personal precautions, protective equipment and emergency procedures</b> | Avoid dust formation. Use breathing apparatus if exposed to dust.                      |
| <b>Environmental precautions</b>                                           | Not applicable                                                                         |
| <b>Methods and material for containment cleaning up</b>                    | Dispose of absorbed material in accordance with the regulations. Take up mechanically. |
| <b>Reference to other sections</b>                                         | See section 8+13                                                                       |

### 7. HANDLING AND STORAGE

|                                                                     |                                                                                                                                                                                                                                                                                                                                                        |
|---------------------------------------------------------------------|--------------------------------------------------------------------------------------------------------------------------------------------------------------------------------------------------------------------------------------------------------------------------------------------------------------------------------------------------------|
| <b>Precautions for safe handling</b>                                | With mechanical processing however fibers can be set free.<br>Avoid the formation and depositions of dust.<br>Provide vacuuming if dust raised.<br>Dust deposits that cannot be avoided must be taken up regularly.<br><br>Wash hands before breaks and after work.<br>Use barrier skin cream<br>take off contaminated clothing and wash before reuse. |
| <b>Conditions for safe storage, including any incompatibilities</b> | No special measures necessary.                                                                                                                                                                                                                                                                                                                         |
| <b>Specific end use(s)</b>                                          | See product use. section 12                                                                                                                                                                                                                                                                                                                            |

### 8. EXPOSURE CONTROL / PERSONAL PROTECTION

|                                                                           |                                                                                                                                                                                    |
|---------------------------------------------------------------------------|------------------------------------------------------------------------------------------------------------------------------------------------------------------------------------|
| <b>Control parameters</b>                                                 |                                                                                                                                                                                    |
| <b>Ingredients with occupational exposure limits to be monitored (GB)</b> |                                                                                                                                                                                    |
| Range [%]                                                                 | Substance                                                                                                                                                                          |
| 85-100                                                                    | glass<br>CAS: 65997-17-3, EINECS/ELINCS: 266-046-0<br>Long-term exposure: TLV-TWA: 1 f/cc (respirable); 5 mg/m <sup>3</sup> (inhalable) (ACGHIH)                                   |
| <b>Exposure controls</b>                                                  |                                                                                                                                                                                    |
| <b>Additional advice on system design</b>                                 | Ensure adequate ventilation on workstation<br>To pay attention to dust limit value (ACGHI-2011: 10 mg/m <sup>3</sup> particle inhalable; 3 mg/m <sup>3</sup> particle respirable). |
| <b>Eye protection</b>                                                     | Safety glasses                                                                                                                                                                     |
| <b>Hand protection</b>                                                    | The details concerned are recommendations. Please contact the glove supplier for further information.                                                                              |
| <b>Skin protection</b>                                                    | Leather (EN 388).<br>Long-sleeved work clothes.                                                                                                                                    |

## CETO 2 WELDING BLANKET

|                                                                     |                                                                                                                                                                                                                                                                                                                                   |
|---------------------------------------------------------------------|-----------------------------------------------------------------------------------------------------------------------------------------------------------------------------------------------------------------------------------------------------------------------------------------------------------------------------------|
| <b>Other</b>                                                        | Avoid contact with eyes and skin.<br>Do not inhale dust.<br>Personal protective equipment should be selected specifically for the working place, depending on concentration and quantity of the hazardous substances handled. The resistance of these equipments to chemicals should be ascertained with the respective supplier. |
| <b>Respiratory protection:</b>                                      | Breathing apparatus in the event of high concentrations.<br>Short term: filter apparatus, filter P2.                                                                                                                                                                                                                              |
| <b>Thermal hazards</b>                                              | No information available                                                                                                                                                                                                                                                                                                          |
| <b>Delimitation and monitoring of the environmental exposition:</b> | not determined                                                                                                                                                                                                                                                                                                                    |

### 9. PHYSICAL AND CHEMICAL PROPERTIES

|                               |                           |                                                  |                 |
|-------------------------------|---------------------------|--------------------------------------------------|-----------------|
| <b>Form</b>                   | Solid in different forms. | <b>Vapour pressure (kPa)</b>                     | Not applicable. |
| <b>Colour</b>                 | Various.                  | <b>Density (g/m)</b>                             | Not determined. |
| <b>Odour</b>                  | Odourless.                | <b>Bulk density (kg/m<sup>3</sup>)</b>           | Not applicable. |
| <b>pH-value</b>               | Not applicable.           | <b>Solubility in water</b>                       | Immiscible.     |
| <b>pH-value, 1 %</b>          | Not applicable.           | <b>Partition coefficient: n-octanol / water</b>  | Not applicable. |
| <b>Boiling point (°C)</b>     | Not applicable.           | <b>Viscosity</b>                                 | Not applicable. |
| <b>Flash point (°C)</b>       | Not applicable.           | <b>Relative vapour density determined in air</b> | Not applicable. |
| <b>Flammability (°C)</b>      | Not applicable.           | <b>Evaporation speed</b>                         | Not applicable. |
| <b>Lower explosion limit</b>  | Not applicable.           | <b>Melting point (°C)</b>                        | Not determined. |
| <b>Upper explosion limit</b>  | Not applicable.           | <b>Autoignition temp. (°C)</b>                   | Not applicable. |
| <b>Combustible properties</b> | No.                       | <b>Decomposition temp. (°C)</b>                  | Not applicable. |

**Other information** No information available

### 10. STABILITY AND REACTIVITY

|                                    |                                                              |
|------------------------------------|--------------------------------------------------------------|
| <b>Reactivity</b>                  | No hazardous reactions known                                 |
| Chemical stability                 | Stable under normal ambient conditions (ambient temperature) |
| Possibility of hazardous reactions | No hazardous reactions known                                 |
| Conditions to avoid                | No information available                                     |
| Incompatible materials             | No information available                                     |
| Hazardous decompositions products  | No hazardous products known                                  |

### 11. TOXICOLOGICAL INFORMATION

|                                      |                                                                                                                                              |
|--------------------------------------|----------------------------------------------------------------------------------------------------------------------------------------------|
| <b>Acute oral toxicity:</b>          | not determined                                                                                                                               |
| <b>Acute dermal toxicity:</b>        | not determined                                                                                                                               |
| <b>Acute inhalational toxicity:</b>  | not determined                                                                                                                               |
| <b>Irritant effect on eye:</b>       | not determined                                                                                                                               |
| <b>Irritant effect on skin:</b>      | not determined                                                                                                                               |
| <b>Sensitization:</b>                | not determined                                                                                                                               |
| <b>Subacute toxicity:</b>            | not determined                                                                                                                               |
| <b>Chronic toxicity:</b>             | not determined                                                                                                                               |
| <b>Mutagenicity:</b>                 | not determined                                                                                                                               |
| <b>Reproduction toxicity:</b>        | not determined                                                                                                                               |
| <b>Carcinogenicity:</b>              | not determined                                                                                                                               |
| <b>Experiences made in practice:</b> | Contains fibres with diameter > 6 micrometers. The filament is not breathable (WHO).<br>Fiber abrasion can cause mechanical skin irritation. |
| <b>General remarks:</b>              | No classification on the basis of the calculation procedure of the preparation directive.                                                    |

## CETO 2 WELDING BLANKET

### 12. ECOLOGICAL INFORMATION

#### Toxicity

#### Persistence and degradability

#### Behaviour in environment compartments

not applicable

**Behaviour in sewage plant** not applicable

**Biological degradability** not applicable

**Bioaccumulative potential** No information available

**Mobility in soil** No information available

#### Results of PBT and vPvB assessment

No information available

#### Otherwise adverse effects

The product is insoluble in water.  
Can be separated out mechanically in purifications plants.

### 13. DISPOSAL CONSIDERATIONS

#### Waste treatment methods

Waste material must be disposed of in accordance with the Directive on waste 2008/98/EC as well as other national and local regulations. It is not possible to determine a waste code for this product in accordance with the European Waste Catalogue (EWC) since it is only possible to classify it according to how it is used by the customer. The waste code is to be determined within the EU in liaison with the waste-disposal operator.

#### Product

Coordinate disposal with the authorities if necessary.

#### Waste no. (recommended)

101112  
101103

#### Contaminated packaging

Uncontaminated packaging may be taken for recycling

#### Waste no. (recommended)

150101  
150102

### 14. TRANSPORT INFORMATION

#### UN number

see section 14 in accordance with UN shipping name

#### UN proper shipping name

#### Transport by land according to ADR/RID

NO DANGEROUS GOODS

#### Inland navigation (ADN)

NO DANGEROUS GOODS

#### Marine transport in accordance with IMDG

NO DANGEROUS GOODS

#### Air transport in accordance with IMDG

NO DANGEROUS GOODS

#### Transport hazard class(es)

see section 14 in accordance with UN shipping name

#### Packing group

see section 14 in accordance with UN shipping name

#### Environmental hazards

see section 14 in accordance with UN shipping name

#### Special precautions for user

relevant information under section 6 to 8

#### Transport in bulk according to Annex II of MARPOL73/78 and the IBC code

not applicable

## CETO 2 WELDING BLANKET

### 15. REGULATORY INFORMATION

#### Safety, health and environmental regulations/legislation specific for the substance or mixture

|                                  |                                                                                                                                             |
|----------------------------------|---------------------------------------------------------------------------------------------------------------------------------------------|
| <b>EEC-REGULATIONS:</b>          | 1967/548 (2008/58, 30. ATP/ 31. ATP); 1991/689 (2001/118); 1999/13; 2004/42; 648/2004; 1907/2006 (Reach); 1272/2008; 75/324/EWG (2008/47/EG |
| <b>TRANSPORT-REGULATIONS:</b>    | DOT-Classification, ADR (2009); IMDG-Code (34. Amdt.); IATA-DGR (2010).                                                                     |
| <b>NATIONAL REGULATIONS (GB)</b> | EH40/2005 Workplace exposure limits with amendments October 2007.<br>CHIP 3/ CHIP 4                                                         |

#### Observe employment restrictions for people

|                        |                                  |
|------------------------|----------------------------------|
| <b>OC (1999/13/CE)</b> | Not applicable<br>Not applicable |
|------------------------|----------------------------------|

|                                   |                                                                                 |
|-----------------------------------|---------------------------------------------------------------------------------|
| <b>Chemical safety assessment</b> | Chemical safety assessments for substances in this mixture were not carried out |
|-----------------------------------|---------------------------------------------------------------------------------|

### 15. OTHER INFORMATION

#### Abbreviations and acronyms:

|                                                                                                                         |
|-------------------------------------------------------------------------------------------------------------------------|
| ADR = Accord européen relatif au transport international des marchandises Dangereuses par Route                         |
| RID = Règlement concernant le transport international ferroviaire de marchandises dangereuses                           |
| ADN = Accord européen relatif au transport international des marchandises dangereuses par voie de navigation intérieure |
| CAS = Chemical Abstracts Service                                                                                        |
| CLP = Classification, Labelling and Packaging                                                                           |
| DMEL = Derived Minimum Effect Level                                                                                     |
| DNEL = Derived No Effect Level                                                                                          |
| EC50 = Median effective concentration                                                                                   |
| ECB = European Chemicals Bureau                                                                                         |
| EEC = European Economic Community                                                                                       |
| EINECS = European Inventory of Existing Commercial Chemical Substances                                                  |
| ELINCS = European List of Notified Chemical Substances                                                                  |
| GHS = Globally Harmonized System of Classification and Labelling of Chemicals                                           |
| IATA = International Air Transport Association                                                                          |
| IBC-Code = International Code for the Construction and Equipment of Ships carrying Dangerous Chemicals in Bulk          |
| IC50 = Inhibition concentration, 50%                                                                                    |
| IMDG = International Maritime Code for Dangerous Goods                                                                  |
| IUCLID = International Uniform Chemical Information Database                                                            |
| LC50 = Lethal concentration, 50%                                                                                        |
| LD50 = Median lethal dose                                                                                               |
| MARPOL = International Convention for the Prevention of Marine Pollution from Ships                                     |
| PBT = Persistent, Bioaccumulative and Toxic substance                                                                   |
| PNEC = Predicted No-Effect Concentration                                                                                |
| REACH = Registration, Evaluation, Authorisation and Restriction of Chemicals                                            |
| TLV®/TWA = Threshold limit value – time-weighted average                                                                |
| TLV®STEL = Threshold limit value – short-time exposure limit                                                            |
| VOC = Volatile Organic Compounds                                                                                        |
| vPvB = very Persistent and very Bioaccumulative                                                                         |

|                |                |
|----------------|----------------|
| Customs tariff | Not determined |
|----------------|----------------|

*Disclaimer: This information is based on our present knowledge. However, this shall not constitute a guarantee for any specific product features and shall not establish a legally valid contractual relationship.*

## CETO 2 WELDING BLANKET

### TECHNICAL DATA

| Test                 |      | Standard             |                   |
|----------------------|------|----------------------|-------------------|
| 1. Weave             |      | cross twill          | DIN 61 101 - 1    |
| 2. Width             |      | 1000 mm              | DIN EN 1773       |
| 3. Thickness         |      | 0,44 mm              | DIN EN ISO 2286-3 |
| 4. Weight            |      | 590 g/m <sup>2</sup> | DIN EN ISO 12127  |
| 5. Number of threads | warp | 19,0 threads/cm      | DIN EN 1049 - 2   |
|                      | weft | 11,0 threads/cm      |                   |
| 6. Yarn count        | warp | 136 tex              | DIN EN ISO 2060   |
|                      | weft | 136 tex              |                   |
| 7. Filament diameter | warp | 9 µm                 | DIN 53 811        |
|                      | weft | 9 µm                 |                   |
| 8. Tensile strength  | warp | > 2900 N/5 cm        | ISO 4606          |
|                      | weft | > 1900 N/5 cm        |                   |