

ATHENA SCHWEISSDECKEN

Umschreibung

Athena ist ein Glas-Filamentgewebe mit einer beidseitigen, silbergrauen, schwerentflammbare P.U.-Beschichtung mit Aluminiumpigmentierung zur Erhöhung der Schiebe- und Schnittfestigkeit.

Temperatur

Höchsttemperatur 550°C, kurzzeitige Belastung bis ca. 600°C.

Technische Anwendungsinformationen

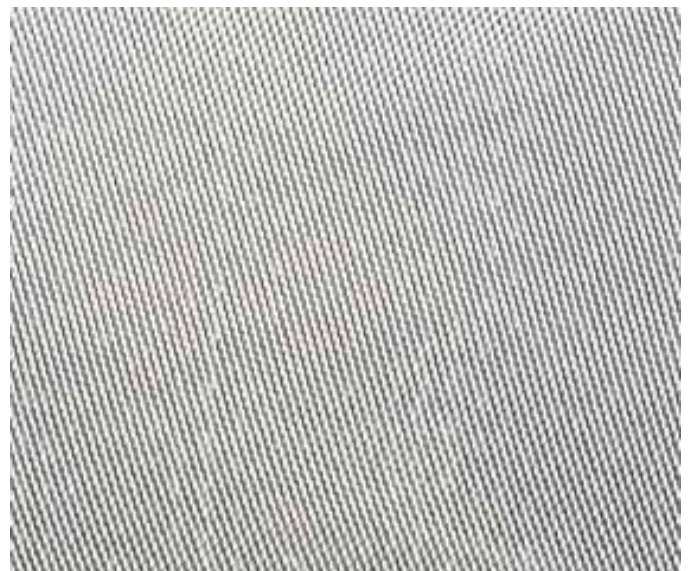
- CEPRO empfiehlt einen mehrlagigen Einsatz von Decken zum optimalen Schutz.
- Setzen Sie Schweisdecken vorzugsweise in einem Winkel von mindestens 15 Grad ein.
- Die Temperaturangabe dient als Richtschnur, Sie sollen, das ausgewählte Decke bzw. Hitzeschutzgewebe immer vorab auf seine Eignung hin zu testen.
- Kontrollieren Sie die Schweisdecken regelmässig auf Risse und/oder andere Mängel. Ersetzen Sie beschädigte Schweisdecken nach Bedarf.
- Wegen des sehr vielfältigen Gebrauchs von Schweisdecken kann keine Garantie auf den Gebrauch der Schweisdecken gegeben werden. Der Endnutzer ist dafür verantwortlich zu bestimmen, ob die Schweisdecken sich für die spezifische Situation eignen und einen ausreichenden Schutz während der auszuführenden Arbeiten bieten.
- CEPRO Schweisdecken werden an den Schnittkanten mit hochwertigem Kevlar-Garn verarbeitet.

Eigenschaften

Athena ist für vertikale Anwendungen, wie z.B. Schleif- und Schweißvorhang geeignet und zwar unter Umständen denen sie hohen Temperaturen ausgesetzt sind. Oder als Schweißdecke wenn weniger hohe Temperaturen in Frage kommen.

Verfügbare Abmessungen

Athena Schweisdecke, 100 x 100 cm	56.52.21
Athena Schweisdecke, 200 x 100 cm	56.52.22
Athena Schweisdecke, 200 x 200 cm	56.52.25
Athena Schweisdecke, 200 x 300 cm	56.52.26
Athena Schweisdecke, 300 x 300 cm	56.52.27
Athena Schweisdecke, 400 x 400 cm	56.52.29
Athena Schweisdecke, 400 x 600 cm	56.52.292
Ganze Rolle 25 lfm, Breite 100 cm	56.52.02.1025
Sondergrössen	56.52.20



ATHENA WELDING BLANKET



CREPIM
 Société par Actions Simplifiée -792 178 816 R.C.S. ARRAS
 Siège social : Parc de la Porte Nord - rue Christophe Colomb.
 62700 BRUAY LA BUISSIÈRE France
 Tél.: 03.21.61.64.00 Fax : 03.21.61.64.01
 E-mail : contact@crepim.fr www.crepim.fr
 SIRET 792 178 816 00015 / APE 7112B / T.V.A. FR85 792 178 816

Le classement complémentaire en relation avec la production de fumée est / *Complementary classification in relation to smoke production is: s1.*

Le classement complémentaire en relation avec les gouttelettes/particules enflammées est / *Complementary classification in relation to fall of flaming droplets/particles is: d0.*

Le format du classement de réaction au feu pour les produits de construction, à l'exception des revêtements de sol et des produits d'isolation thermique pour conduites linéaires est / *The format of the reaction to fire classification for construction products excluding flooring and linear pipe thermal insulation products is:*

Comportement au feu <i>Fire behaviour</i>		Production de fumée <i>Smoke production</i>			Gouttelettes enflammées <i>Flaming droplets</i>	
A2	-	s	1	,	d	0

Autrement dit / *In other words, A2 – s1, d0*

**Classement de réaction au feu /
 Reaction to fire classification :**

A2-s1,d0

4.3 Champ d'application / *Field of application:*

Le présent classement est valable pour les paramètres suivants liés au produit / *The classification is valid for the following product parameters :*

Composition : Aucune variation autorisée / *No variation allowed*

Épaisseur / *Thickness:* 0.4 – 0.7 mm

Masse surfacique / *Surface density:* 0.46 – 0.72 kg/m²

Face exposée / *Exposed face :* Faces identiques / *Identical faces*

Couleur / *Color :* Gris / *Grey*

Le classement est valable pour les conditions d'utilisation finale suivantes / *The classification is valid for the following end-use condition:*

Support / *Substrate :* Acier 0.8mm 7850kg/m³ et tous les substrats d'utilisation finale classés A1 de densité supérieure à 5887.5 kg/m³ et dont la température de fusion est supérieure à 1000°C / *Used over a Steel 0.8mm 7850kg/m³ and all substrates classified A1 which density is superior to 5887.5 kg/m³ and having a fusion temperature superior to 1000°C.*

Fixation / *Mounting method:* Chaque échantillon est fixé mécaniquement et suspendu librement par-dessus un cadre métallique créant une lame d'air de 40mm / *Each sample is mechanically fixed and freely suspended over a metal frame creating a 40mm thick air gap.*

Pour déclarer, ou non, la conformité à la spécification, il n'a pas été tenu explicitement compte de l'incertitude associée au résultat
 Whether or not to declare compliance with the specification, the uncertainty associated with the result was not explicitly taken into account
 La reproduction de ce rapport d'essai n'est autorisée que sous sa forme intégrale
 Reproduction of this test report is only permitted in its full form
 Le CREPIM ne peut être tenu responsable des informations relatives à l'élément testé. Ces informations sont fournies par le demandeur.
 CREPIM cannot be held responsible for information relating to the tested element. This information is provided by the applicant.

5/18

ATHENA WELDING BLANKET

1. IDENTIFICATION OF THE SUBSTANCE / PREPARATION AND COMPANY

Product description	Glass fibre material		
Manufacturer / Supplier	Cepro International BV Provinciënbaan 16 NL-5121 DL RIJEN The Netherlands	Date of issue	February 2014
	Tel. no. for information / emergency	+31 (0)161 22 64 72	
	Fax no. for information / emergency	+31 (0)161 22 49 73	

2. HAZARD INFORMATION

Classification of the substance or mixture

Classification according to Regulation (EC) No 1272/2008 [CLP]

Not determined

Classification according to Regulation 67/548/EEC or 1999/45/EC

No classification

Label elements

The product does not require a hazard warning label in accordance with EC-directives. This product is an article and therefore it does not require labelling according to EC directives/GefStoffV.

Other hazards

Physico-chemical hazards

no particular hazards known.

Environmental hazards

no particular hazards known.

Other hazards

none

3. COMPOSITION / INFORMATION ON INGREDIENTS

Range [%]	Substance
85-100	glass CAS:65997-17-3, EINECS/ELINCS: 266-046-0

Comment on component parts	No dangerous components. Substances of Very High Concern - SVHC: substances are not contained or are below 0,1 %.
----------------------------	--

4. FIRST AID MEASURES

Description of first aid measures

General information Change soaked clothing.

Inhalation Ensure supply of fresh air. In the event of symptoms refer for medical treatment.

Skin contact When in contact with the skin, clean with soap and water. Consult a doctor if skin irritation persists.

Eye contact In case of contact with eyes rinse thoroughly with plenty of water and seek medical advice.

Ingestion Not applicable

Most important symptoms and effects, both acute and delayed

No information available

Indication of any immediate medical attention and special treatment needed

Treat symptomatically
Forward this sheet to the doctor.

ATHENA WELDING BLANKET

5. FIRE-FIGHTING MEASURES

Suitable extinguishing media	Product itself is non-combustible. Fire extinguishing method of surrounding areas must be considered.
Extinguishing media that must not be used	None.
Special hazards arising from the substance or mixture	Unknown risk of formation of toxic pyrolysis products.
Advice for fire-fighters	not applicable Fire residues and contaminated fire-fighting water must be disposed of in accordance with the local regulations.

6. ACCIDENTAL RELEASE MEASURES

Personal precautions, protective equipment and emergency procedures	Avoid dust formation. Use breathing apparatus if exposed to dust.
Environmental precautions	Not applicable
Methods and material for containment cleaning up	Dispose of absorbed material in accordance with the regulations. Take up mechanically.
Reference to other sections	See section 8+13

7. HANDLING AND STORAGE

Precautions for safe handling	With mechanical processing however fibers can be set free. Avoid the formation and depositions of dust. Provide vacuuming if dust raised. Dust deposits that cannot be avoided must be taken up regularly. Wash hands before breaks and after work. Use barrier skin cream take off contaminated clothing and wash before reuse.
Conditions for safe storage, including any incompatibilities	No special measures necessary.
Specific end use(s)	See product use. section 12

8. EXPOSURE CONTROL / PERSONAL PROTECTION

Control parameters	
Ingredients with occupational exposure limits to be monitored (GB)	
Range [%]	Substance
85-100	glass CAS: 65997-17-3, EINECS/ELINCS: 266-046-0 Long-term exposure: TLV-TWA: 1 f/cc (respirable): 5 mg/m ³ (inhalable) (ACGHIH)
Exposure controls	
Additional advice on system design	Ensure adequate ventilation on workstation To pay attention to dust limit value (ACGHI-2011: 10 mg/m ³ particle inhalable; 3 mg/m ³ particle respirable).
Eye protection	Safety glasses
Hand protection	The details concerned are recommendations. Please contact the glove supplier for further information. Leather (EN 388).
Skin protection	Long-sleeved work clothes.

ATHENA WELDING BLANKET

Other	Avoid contact with eyes and skin. Do not inhale dust. Personal protective equipment should be selected specifically for the working place, depending on concentration and quantity of the hazardous substances handled. The resistance of these equipments to chemicals should be ascertained with the respective supplier.
Respiratory protection:	Breathing apparatus in the event of high concentrations. Short term: filter apparatus, filter P2.
Thermal hazards	No information available
Delimitation and monitoring of the environmental exposition:	not determined

9. PHYSICAL AND CHEMICAL PROPERTIES

Form	Solid in different forms.	Vapour pressure (kPa)	Not applicable.
Colour	Various.	Density (g/m)	Not determined.
Odour	Odourless.	Bulk density (kg/m³)	Not applicable.
pH-value	Not applicable.	Solubility in water	Immiscible.
pH-value, 1 %	Not applicable.	Partition coefficient: n-octanol / water	Not applicable.
Boiling point (°C)	Not applicable.	Viscosity	Not applicable.
Flash point (°C)	Not applicable.	Relative vapour density determined in air	Not applicable.
Flammability (°C)	Not applicable.	Evaporation speed	Not applicable.
Lower explosion limit	Not applicable.	Melting point (°C)	Not determined.
Upper explosion limit	Not applicable.	Autoignition temp. (°C)	Not applicable.
Combustible properties	No.	Decomposition temp. (°C)	Not applicable.

Other information No information available

10. STABILITY AND REACTIVITY

Reactivity	No hazardous reactions known
Chemical stability	Stable under normal ambient conditions (ambient temperature)
Possibility of hazardous reactions	No hazardous reactions known
Conditions to avoid	No information available
Incompatible materials	No information available
Hazardous decompositions products	No hazardous products known

11. TOXICOLOGICAL INFORMATION

Acute oral toxicity:	not determined
Acute dermal toxicity:	not determined
Acute inhalational toxicity:	not determined
Irritant effect on eye:	not determined
Irritant effect on skin:	not determined
Sensitization:	not determined
Subacute toxicity:	not determined
Chronic toxicity:	not determined
Mutagenicity:	not determined
Reproduction toxicity:	not determined
Carcinogenicity:	not determined
Experiences made in practice:	Contains fibres with diameter > 6 micrometers. The filament is not breathable (WHO). Fiber abrasion can cause mechanical skin irritation.
General remarks:	No classification on the basis of the calculation procedure of the preparation directive.

ATHENA WELDING BLANKET

12. ECOLOGICAL INFORMATION

Toxicity

Persistence and degradability

Behaviour in environment compartments

not applicable

Behaviour in sewage plant not applicable

Biological degradability not applicable

Bioaccumulative potential No information available

Mobility in soil No information available

Results of PBT and vPvB assessment

No information available

Otherwise adverse effects

The product is insoluble in water.
Can be separated out mechanically in purifications plants.

13. DISPOSAL CONSIDERATIONS

Waste treatment methods

Waste material must be disposed of in accordance with the Directive on waste 2008/98/EC as well as other national and local regulations. It is not possible to determine a waste code for this product in accordance with the European Waste Catalogue (EWC) since it is only possible to classify it according to how it is used by the customer. The waste code is to be determined within the EU in liaison with the waste-disposal operator.

Product

Coordinate disposal with the authorities if necessary.

Waste no. (recommended)

101112
101103

Contaminated packaging

Uncontaminated packaging may be taken for recycling

Waste no. (recommended)

150101
150102

14. TRANSPORT INFORMATION

UN number

see section 14 in accordance with UN shipping name

UN proper shipping name

Transport by land according to ADR/RID

NO DANGEROUS GOODS

Inland navigation (ADN)

NO DANGEROUS GOODS

Marine transport in accordance with IMDG

NO DANGEROUS GOODS

Air transport in accordance with IMDG

NO DANGEROUS GOODS

Transport hazard class(es)

see section 14 in accordance with UN shipping name

Packing group

see section 14 in accordance with UN shipping name

Environmental hazards

see section 14 in accordance with UN shipping name

Special precautions for user

relevant information under section 6 to 8

Transport in bulk according to Annex II of MARPOL73/78 and the IBC code

not applicable

ATHENA WELDING BLANKET

15. REGULATORY INFORMATION

Safety, health and environmental regulations/legislation specific for the substance or mixture

EEC-REGULATIONS:	1967/548 (2008/58, 30. ATP/ 31. ATP); 1991/689 (2001/118); 1999/13; 2004/42; 648/2004; 1907/2006 (Reach); 1272/2008; 75/324/EWG (2008/47/EG
TRANSPORT-REGULATIONS:	DOT-Classification, ADR (2009); IMDG-Code (34. Amdt.); IATA-DGR (2010).
NATIONAL REGULATIONS (GB)	EH40/2005 Workplace exposure limits with amendments October 2007. CHIP 3/ CHIP 4

Observe employment restrictions for people

OC (1999/13/CE)	Not applicable Not applicable
------------------------	----------------------------------

Chemical safety assessment	Chemical safety assessments for substances in this mixture were not carried out
-----------------------------------	---

15. OTHER INFORMATION

Abbreviations and acronyms:

ADR = Accord européen relatif au transport international des marchandises Dangereuses par Route
RID = Règlement concernant le transport international ferroviaire de marchandises dangereuses
ADN = Accord européen relatif au transport international des marchandises dangereuses par voie de navigation intérieure
CAS = Chemical Abstracts Service
CLP = Classification, Labelling and Packaging
DMEL = Derived Minimum Effect Level
DNEL = Derived No Effect Level
EC50 = Median effective concentration
ECB = European Chemicals Bureau
EEC = European Economic Community
EINECS = European Inventory of Existing Commercial Chemical Substances
ELINCS = European List of Notified Chemical Substances
GHS = Globally Harmonized System of Classification and Labelling of Chemicals
IATA = International Air Transport Association
IBC-Code = International Code for the Construction and Equipment of Ships carrying Dangerous Chemicals in Bulk
IC50 = Inhibition concentration, 50%
IMDG = International Maritime Code for Dangerous Goods
IUCLID = International Uniform Chemical Information Database
LC50 = Lethal concentration, 50%
LD50 = Median lethal dose
MARPOL = International Convention for the Prevention of Marine Pollution from Ships
PBT = Persistent, Bioaccumulative and Toxic substance
PNEC = Predicted No-Effect Concentration
REACH = Registration, Evaluation, Authorisation and Restriction of Chemicals
TLV®/TWA = Threshold limit value – time-weighted average
TLV®STEL = Threshold limit value – short-time exposure limit
VOC = Volatile Organic Compounds
vPvB = very Persistent and very Bioaccumulative

Customs tariff	Not determined
----------------	----------------

Disclaimer: This information is based on our present knowledge. However, this shall not constitute a guarantee for any specific product features and shall not establish a legally valid contractual relationship.

ATHENA WELDING BLANKET

TECHNICAL DATA

Test			Standard
1. Weave		4H Satin weave	
2. Width		1000 mm	ASTM D3776-96
3. Thickness		0,41 mm	ASTM D1777-96
4. Weight		470 g/m ²	ASTM D3776-96
5. Flame resistance			
Char length		10 mm	FED 191/5903.2
Afterglow		0.5 second max.	
Flame out		0 second max.	